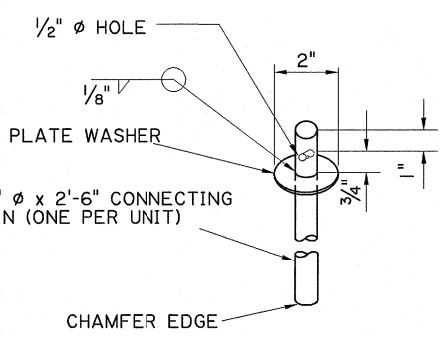


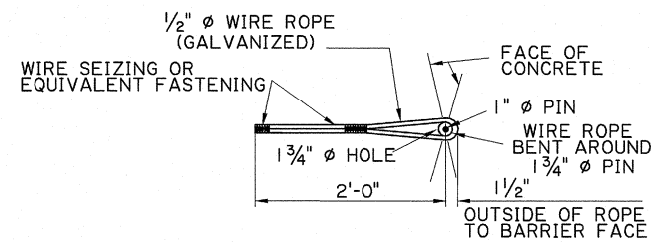
* DIMENSIONS MARKED THUS ARE TO THE INTERSECTION POINT OF THE BARRIER SLOPES. CONSTRUCT THE 10" RADIUS TO PROVIDE A SMOOTH TRANSITION BETWEEN THE SLOPES.

SECTION A-A
SHOWING JERSEY BARRIER END (SEE NOTE "8")

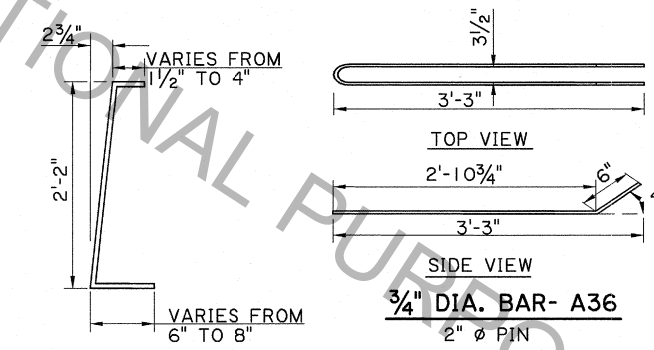
SECTION B-B
SHOWING "F" SHAPE BARRIER END (SEE NOTE "8")



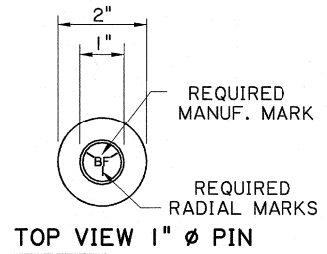
DETAIL "A"



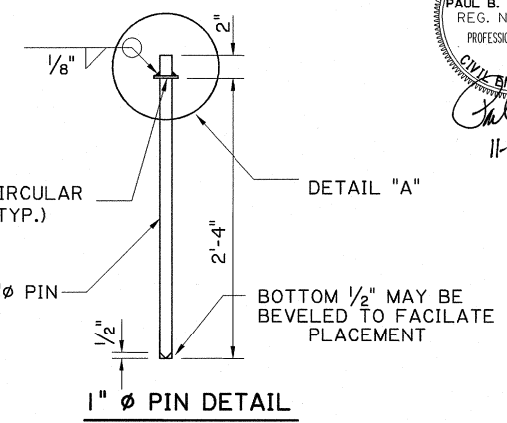
WIRE ROPE LOOP DETAIL



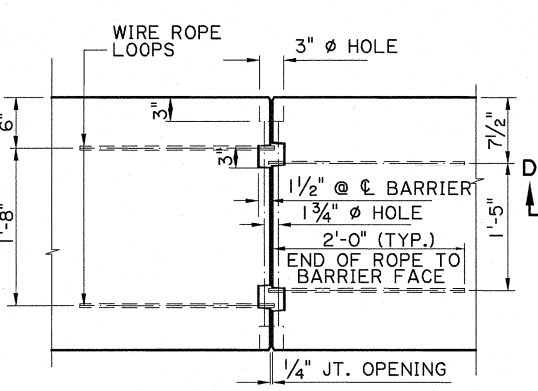
402 STIRRUPS



TOP VIEW 1" DIAMETER PIN

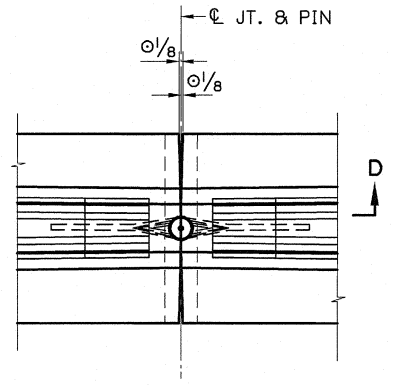


1" DIAMETER PIN DETAIL



SECTION D-D

SHOWING CONNECTION AT JERSEY SHAPE BARRIER END



PLAN AT JOINT

ESTIMATED QUANTITIES-ONE (1) 15'-0" PRECAST TRANSITION BARRIER					
BAR NO.	SHORT BAR	VARIES (FT.)	LONG BAR	TOTAL LENGTH	LOCATION
401	8		14'-4"	114'-8"	LONGITUDINAL
402	22	2'-9"	3'-2"	65'-1"	STIRRUPS
TOTAL NO. 4 BARS = 179'-9" = 120 LBS.					
DEFORMED REINFORCING STEEL = 120 LBS.					
3/4" DIA. BAR-A36 STEEL = 20'-3" = 30 LBS.					
CLASS A1 CONCRETE = 1.71 CU. YDS.					
BARRIER WEIGHT = 6,771 LBS.					



NOTES:

1. TRANSITION BARRIER TO BE USED ONLY WHEN JOINING A TEMPORARY "JERSEY" BARRIER TO A TEMPORARY "F" SHAPE BARRIER. MULTIPLE USE OF THE BARRIER TRANSITION IS NOT ALLOWED ON A PROJECT.
2. 1" DIAMETER STEEL PIN: PIN SHALL CONFORM TO ASTM A449 OR ASTM A193, GRADE B7. 3/4" DIA. STEEL BAR SHALL CONFORM TO ASTM A36.
3. ALL REINFORCING STEEL SHALL HAVE A YIELD STRENGTH, fy=60 ksi. ALL REINFORCING STEEL SHALL BE 2" CLEAR FROM FACE OF CONCRETE, UNLESS OTHERWISE NOTED.
4. CONCRETE BARRIER SHALL BE CLASS A1. ALL PRECAST BARRIER UNITS SHALL BE HELD AT THE PLANT A MINIMUM OF 10 DAYS AFTER CASTING.
5. UPON COMPLETION OF PROJECT, THE CONTRACTOR SHALL REMOVE AND TRANSPORT THE BARRIER UNITS AS DIRECTED BY THE PROJECT ENGINEER.
6. GALVANIZING: 1" DIAMETER PIN, 1/2" WIRE ROPE LOOP, AND 3/4" DIA. BARS SHALL BE GALVANIZED IN ACCORDANCE WITH ASTM A-123.
7. PAYMENT: QUANTITIES SHOWN ARE FOR ESTIMATION PURPOSES ONLY. CLASS A1 CONCRETE, REINFORCING STEEL, PINS, A36 STEEL, WASHERS, WIRE LOOP, AND GALVANIZING ARE TO BE INCLUDED IN PRICE FOR TEMPORARY PRECAST CONCRETE BARRIER (CONTRACTOR FURNISHED) OR TEMPORARY PRECAST CONCRETE BARRIER (DEPARTMENT FURNISHED) PAY ITEM.
8. CONTRACTOR IS REQUIRED TO ORIENT THE TEMPORARY BARRIERS ("JERSEY" SHAPE OR "F" SHAPE) SO THAT EACH BARRIER END WILL CONNECT TO THE PROPER TRANSITION BARRIER END CONNECTION.

SHEET NUMBER	PARISH	DESIGNED BY	DATE
		P. FOSSIER	OCT., 2008
	FEDERAL PROJECT	CHECKED BY	SHEET
		G. GRASS	1
	STATE PROJECT	DATE	
		K.M.B.	
	REVISION DESCRIPTION		
	UPDATED FOR 2016 SPECIFICATIONS		
	2/9/2017		
	NO.		
	BD-2.6.3-2.01		
TEMPORARY PRECAST BARRIER TRANSITION "F" SHAPE TO "N.J." SHAPE			
BRIDGE AND STRUCTURAL DESIGN			